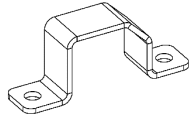


6x 62883



6x R6283



3x 73212



2x RR73000030



12x M8



24x M8x16



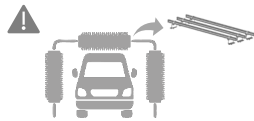
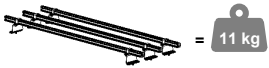
12x M8



12.5m R66652



2x 37000



- 1 Clean rails and corresponding roof surface with SIKI Cleaner P.



- 2 Prime rail and corresponding roof surface. Wait 10 minutes for the primer to dry.



Primer Dry time (can be applied between 5° to 40°)
Above 15° 10 min
Below 15° 30 min



Sika Cleaner P
Art no: 39236

SAFETY GEAR



Primer 507
Art no: 39230-04

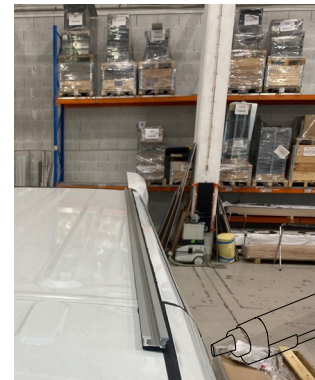


Primer Sponge
Art no: 39231

SAFETY GEAR



- 4 Apply glue (Sikaflex 668) to the first rail and fit it to the section previously primed. Repeat for the second rail.



Glue gun
Art no: 39260



Glue Sikaflex 668
Art no: 39240-04



Glue nozzle
Art no: 39315

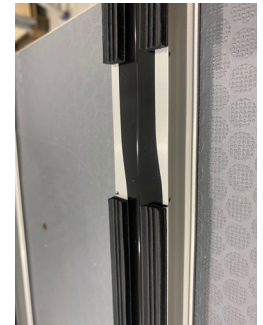
- 5 Mount the end caps on the front part of the roof rails.



SAFETY GEAR



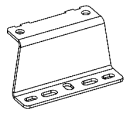
- 3 Apply the seal on the rails like in the images below. Make a cut out for the vehicle beams.



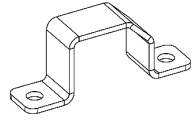
Roof bar kit Maxus e-Deliver, 3 bars



RR73003530



6x 62883



6x R6283



3x 73212



2x RR73000030



12x M8



24x M8x16



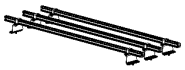
12x M8



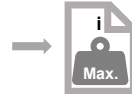
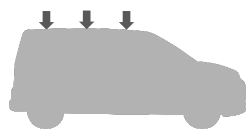
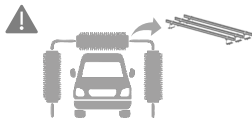
12.5m R66652



2x 37000



= 11 kg



6



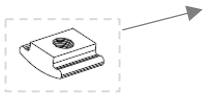
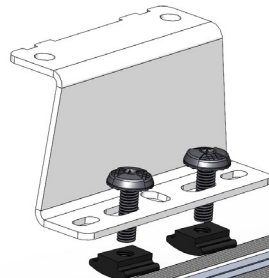
M8x16



M8



20Nm



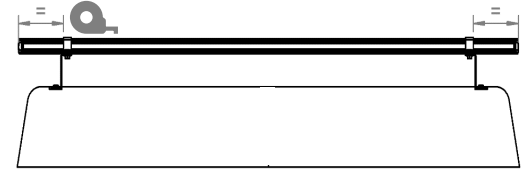
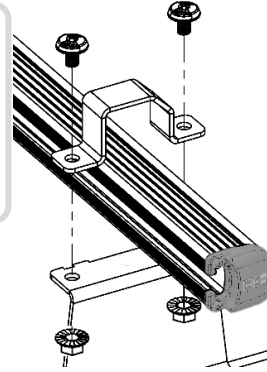
7



M8x16



M8



20Nm

